

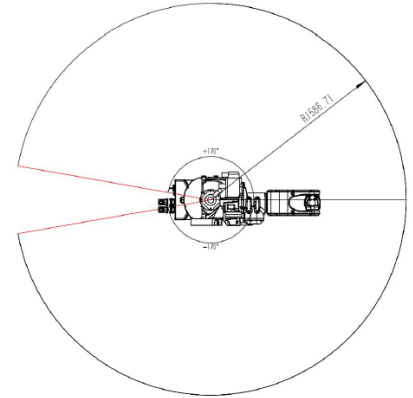
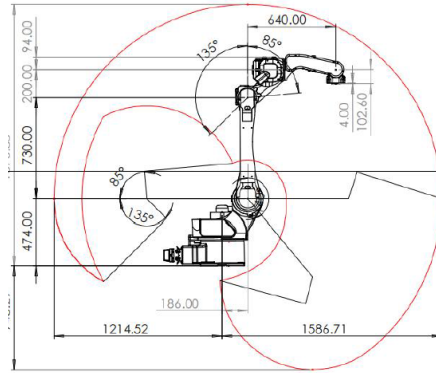


WELDING ROBOT

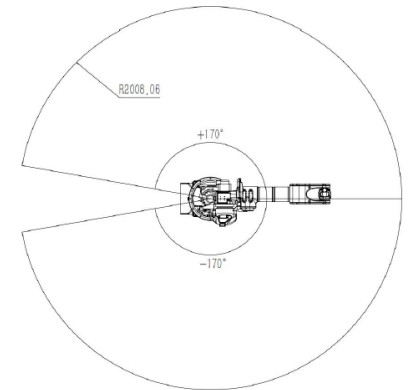
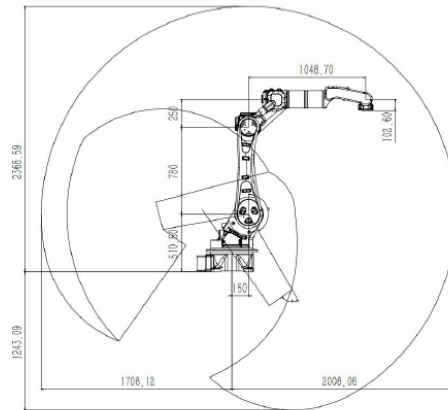
ROBOT EXPERT WHO UNDERSTAND MACHINE TOOLS

PRODUCT SPECIFICATIONS

R41-LA1600-6H-C



R41-LA2000-6H-C



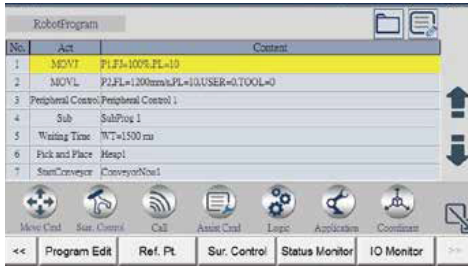
SPECIFICATION

Product Model		R41-LA1600-6H-C	R41-LA2000-6H-C
No. Control Axis		6	6
Payload (kg)		6	6
Max. Reach (mm)		1600	2000
Position.Rep (mm)		±0.08	±0.08
Motion Range (°)	J1 Axis	±170	±170
	J2 Axis	+140/-90	+150/-100
	J3 Axis	+85/-135	+85/-135
	J4 Axis	±180	±180
	J5 Axis	±130	±130
	J6 Axis	±350	±350
Motor Output (kw)	J1 Axis	1.5	1.5
	J2 Axis	1.5	2.0
	J3 Axis	0.75	1.5
	J4 Axis	0.2	0.4
	J5 Axis	0.2	0.2
	J6 Axis	0.2	0.2
Weight (KG)		200	323
Installation		Floor, Upside-Down, Angle	Floor, Upside-Down, Angle
Levels of Protection		IP54	IP54
Ambient Temperature / Humidity / Vibration		Ambient Temperature: 0-40 Ambient Humidity: Normally 75%RH or less (No dew, nor frost allow) Short term 90%RH or less (within one month) Vibration Acceleration: 4.9m/s ² (0.5G) or less	Ambient Temperature: 0-40 Ambient Humidity: Normally 75%RH or less (No dew, nor frost allow) Short term 90%RH or less (within one month) Vibration Acceleration: 4.9m/s ² (0.5G) or less

PRODUCT FEATURES

EASY TO USE

- Icon based interface for intuitive programming



VARIOUS ROBOT FUNCTION

- External axis control
- TCP calibration
- Safety zone



EASY TO INTEGRATE

- Digital communication
- Modbus、ENIP、TCP/IP、ECAT
- In House Customization



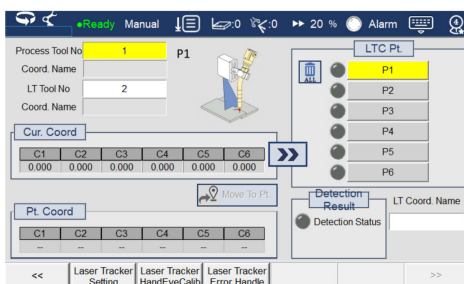
WELDING PACKAGE



- Multiple arc conditions for Arc-Start & Arc-Stop
- Support Weaving Weld & Stitch Weld
- Support Analog & Digital Welder
- Positioner coordinated motion control
- Weld Error Recovery

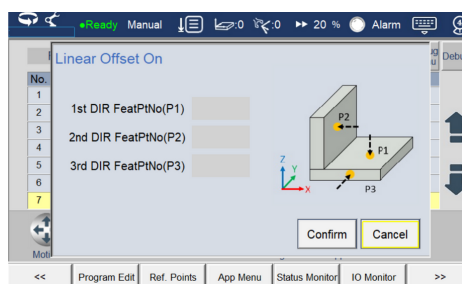
LASER SEARCHING/TRACKING

- Resolve inaccuracies in workpiece clamping and thermal deformations
- Built-in tracker hand-eye calibration



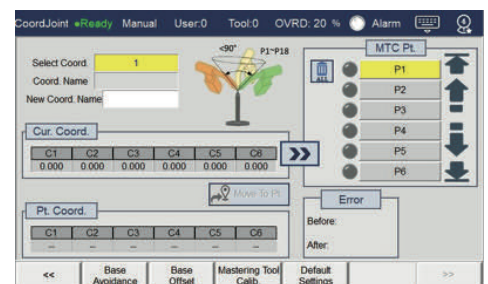
TOUCH SEARCHING

- Resolve inaccuracies in workpiece clamping
- Offering various offset modes



AUTO TCP CALIBRATION

- Auto Teach Tool Center
- Ensure Processing quality





Low Spatter



Digital Control



Stable Wire Feeding



Save & Recall



Built-in Database



User Friendly

SPECIFICATION

Product Model	SP350	NBC500R	MAG-350PRO
Rated Input Voltage/Frequency (V/Hz)	3 phase, 380±20%/50	3 phase, 380±20%/50	3 phase, 380±20%/50
Rated Input Capacity (KVA)	14	25	14
Rated Input Current (A)	21	38	28
Rated Output Voltage (V)	31.5	39	31.5
Duty Cycle (%)	60	100	60
OCV (V)	72	73	90
Output Current/Voltage Range (A)	60A/17V~350A/35V	60A/17V~500A/42V	60A/17V~350A/31.5V
Wire Size	0.8、1.0、1.2	0.8、1.0、1.2、1.6	0.8、1.0、1.2
Gas Flow (L/Min)	15~20	15~20	15~20
Cooling Method	Air Cooled	Air Cooled/Water Cooled	Air Cooled
Protection Class	IP23	IP23	IP23
Insulation Class	H	H	H
Dimension (mm)	660×320×560	660×320×560	635×320×630
Weight (KG)	50	55	60

Fronius WELDING SYSTEM



TPS/i – The MIG/MAG Welding System
The future-proof solution: welding with the TPS/i



Easy to Operate

- thanks to touch display with customizable screen in over 30 languages



Support from stabilizer

- Penetration and arc length stabilizers deliver high weld quality.



Maximum Flexibility

- through expandability with software packages (Welding Packages).

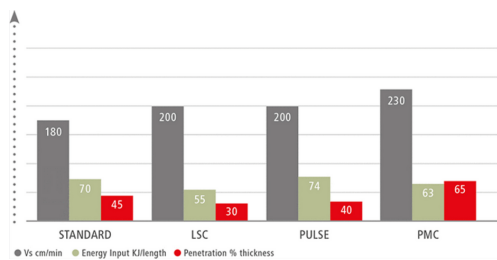


Future-proof welding

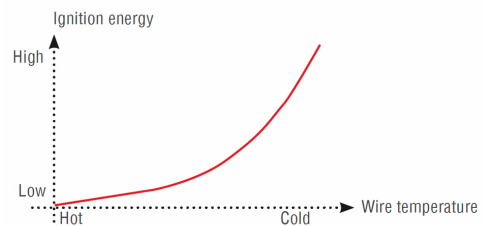
- Thanks to the user-oriented & continuous development software



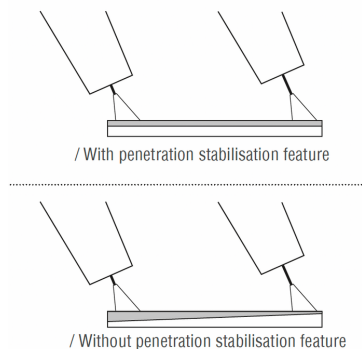
PULSE MULTI CONTROL - PMC



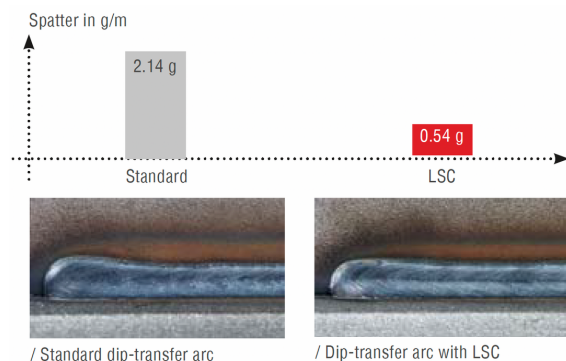
PERFECT IGNITION



PENETRATION STABILISATION



LOW SPATTER CONTROL - LSC



MICORMIG

**SIMPLE
RELIABLE
FUTUREPROOF**

**EFFICIENT.
LOW-SPATTER.
CONTROLLABLE**



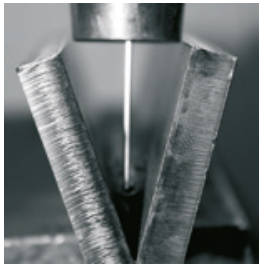
- Quick and simple operation
- Simple setting thanks to pre-defined synergic welding programmes
- Robust & dynamically controller arc
- Simple and cost-efficient entrance into pulse welding
- Suitable for all common materials
- Future-proof: Processes can be upgraded as required
- Simple job memory and transfer by NFC to other MicorMIG systems

ROBO MICORMIG 350 ROBO MICORMIG 400 ROBO MICORMIG 500

PERFECT WELD SEAM IN ANY MATERIAL



MIG-MAG MicroTwin



Speed Arc

Focused arc and a significantly higher arc intensity.

DYNAMIC CONTROLLED ARC



Soft Dynamic

Medium Dynamic

Hard Dynamic

- Hotter arc
- Wider weld pool
- Less penetration

- Medium sidewall fusion
- Regular penetration

- Colder arc
- Narrower weld pool
- Deeper penetration

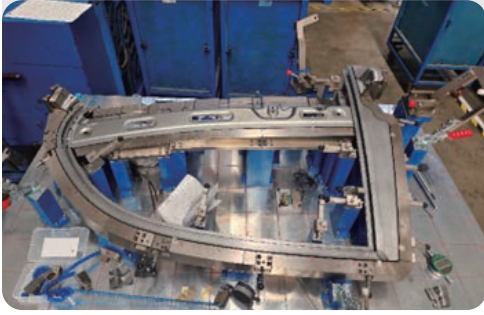


SpeedUp

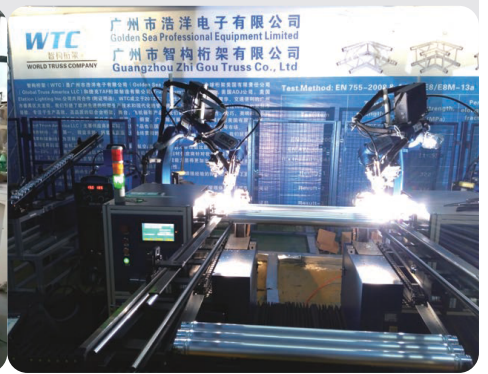
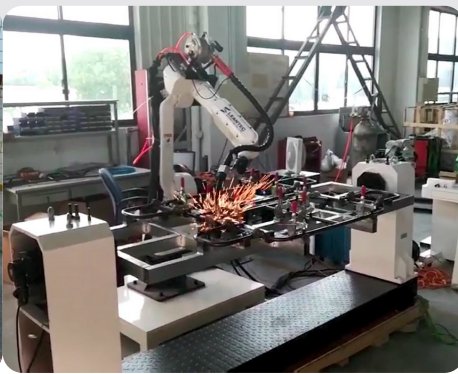
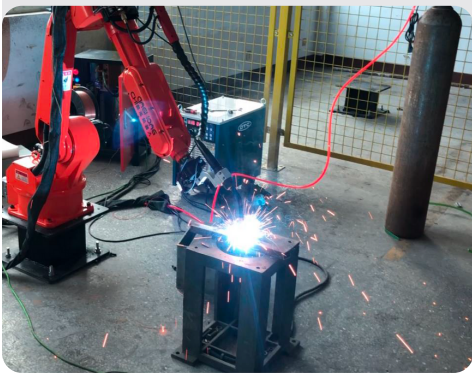
Welding vertical welds without Xmas tree welding

INDUSTRY

Automotive



General



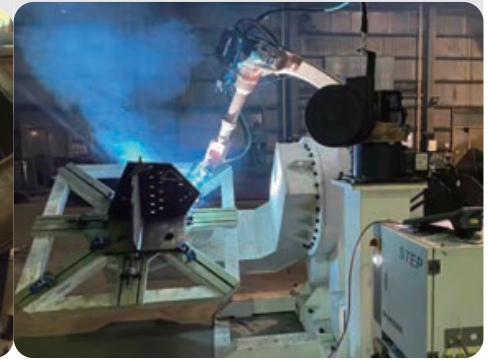
Shipbuilding



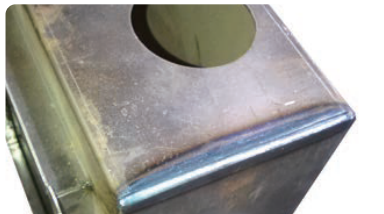
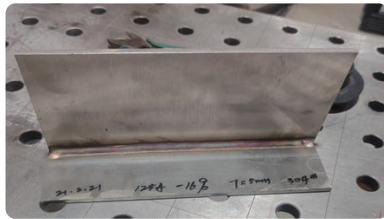
Construction



Power



CASES





ROBOT EXPERT WHO UNDERSTAND MACHINE TOOLS

TAIWAN (HQ)

SYNTEC TECHNOLOGY

No.25, Yanfa 2nd Road, East Dist, Hsinchu City 300, Taiwan

Tel: 886-3-6663553

E-Mail: info@leantec.com.tw

MALAYSIA

MYSYNTEC TECHNOLOGY SDN BHD

No.16, Jalan Astana 1F, 41050 Klang, Selangor, Malaysia

Tel: +603-3311 5887

E-Mail: sales.malaysia@syntecclub.com

THAILAND

SYNTEC TECHNOLOGY (THAILAND) CO., LTD.

78/38 Kheka Romklao Rd, Khlong Song Ton Num, Lat Krabang, Bnagkok, 10520

Tel: +662-006-5738

E-Mail: thanawat@syntecclub.com.tw

USA

SYNTEC TECHNOLOGY INC

2841 Saturn Street Unit D, Brea, CA 92821, USA

Tel: +1 909-551-0187

E-Mail: info@syntecamerica.com

TURKEY

SYNTEC TEKNOLOJİ LTD. ŞTİ.

Küçükbakkalköy Mah. Defne Sok. Flora Residans No:1

D:1502, 34750 Ataşehir/İstanbul, Türkiye

Tel: +90-216-2662475

E-Mail: info@syntec-turkey.com

VIETNAM

SYNTEC VIET NAM TECHNOLOGY CO.,LTD

3F, No. 36, A4 Street, Wars 12, Tan Binh District, Ho Chi Minh City, Vietnam

Tel: +89 938332829

E-Mail: andyngo@syntecclub.com

INDIA

SYNTEC TECHNOLOGY (INDIA) Pvt Ltd

Champaka Building, 2nd floor, No. P-6c, 1st stage, 1st main., Peenya Industrial Area, Bengaluru, Karnataka 560058, India

Tel: +91 99161 46577

E-Mail: raghavendra.naik@syntecclub.com

